



MODUL PENINGKATAN PRESTASI TINGKATAN 5
TAHUN 2014
MAJLIS PENGETUA SEKOLAH MALAYSIA (KEDAH)

MODUL 1 (PERTENGAHAN TAHUN)

BAHASA INGGERIS

KERTAS 1

Satu Jam Empat Puluh Lima Minit

JANGAN BUKA MODUL INI SEHINGGA DIBERITAHU

Arahan

1. Modul ini mengandungi **dua** bahagian.
2. Jawab **kedua-dua** bahagian.
3. Anda dinasihatkan supaya mengambil masa 45 minit untuk menjawab soalan dalam **Bahagian A** dan 1 jam untuk menjawab soalan dalam **Bahagian B**.

Instructions

1. This module consists of **two** sections.
 2. Answer **both** sections.
 3. You are advised to spend about 45 minutes on **Section A** and 1 hour on **Section B**.
-

Section A : Directed Writing

[35 marks]

[Time suggested : 45 minutes]

You are an active member of a new non-governmental organisation in your town, called *Friends of Earth*. Recently, this organisation organised an environmental camp for secondary school students in your district. You have been asked to write an article for the monthly bulletin produced by *Friends of Earth*. Use the following notes to write your article.

In your **article**, include the following:

Camp details

- Date: 27-30 April 2014
- Venue: Rimba Bay, Purnama Island
- Participants: 100 students
- Accommodation: Dormitory
- Trainers: Committee members of *Friends of Earth*

Activities

- Videos on environmental issues
- Beach cleaning
- Handicrafts from recycled items
- Bird-watching

Messages to participants

- Mother Nature dying – polluted world
- Conservation important – play roles effectively

When writing the **article**, you should remember to:

- give a suitable title
- give your name as the writer
- use **all** the information given
- add any other relevant details

Note: For your article, you will receive up to **15 marks** for the format and content points, and up to **20 marks** for the quality of your writing.

Section B : Continuous Writing

[50 marks]

[Time suggested : One hour]

*Write a composition of about **350 words** on **one** of the following topics:*

- 1** Describe a family reunion
- 2** What can we do to become popular?
- 3** Simple steps to happiness
- 4** Write a story that begins with: *I promised you that I would make you proud of me...*
- 5** Websites

KERTAS SOALAN TAMAT



MODUL PENINGKATAN PRESTASI TINGKATAN 5
TAHUN 2014
MAJLIS PENGETUA SEKOLAH MALAYSIA (KEDAH)

MODUL 1 (PERTENGAHAN TAHUN)

BAHASA INGGERIS
KERTAS 2

Dua Jam Lima Belas Minit

JANGAN BUKA MODUL INI SEHINGGA DIBERITAHU

Arahan

1. Modul ini mengandungi **empat** bahagian.
2. Jawab **semua** bahagian.
3. Anda dinasihatkan supaya mengambil masa 25 minit untuk menjawab soalan **Bahagian A**, 25 minit untuk **Bahagian B**, 50 minit untuk **Bahagian C** dan 35 minit untuk **Bahagian D**.
4. Soalan-soalan yang dikemukakan dalam modul ini mempunyai **empat** pilihan jawapan.
5. Tandakan jawapan Bahagian A pada kertas jawapan yang disediakan di **muka surat 17**.

Instructions

1. This module consists of **four** sections.
2. Answer **all** sections.
3. You are advised to spend about 25 minutes on **Section A**, 25 minutes on **Section B**, 50 minutes on **Section C** and 35 minutes on **Section D**.
4. Questions in this module **have four** options.
5. Mark your answers for Section A on the answer sheet on **page 17**.

Examiner's Code		
Section	Marks	
A	15	
B	10	
C	25	
D	20	
Total	70	

Modul ini mengandungi 17 halaman bercetak

<http://edu.joshuatly.com/>
<facebook.com/edu.joshuatly>

Section A

[15 marks]

LITTLE COTTAGE

HAPPY MOTHER'S DAY

**Get your beautiful roses here!
For enquires and early
bookings: 707-6472711**



- 1 You may call Little Cottage to
- A surprise the florist.
 - B give beautiful roses.
 - C order flowers as a gift.
 - D enquire about Mother's Day.

7.00 p.m.	Spirit of Love
7.30 p.m.	Do You Dare (Game Show)
8.00 p.m.	Bulletin on 6
9.00 p.m.	Sunday Film: <i>The Odyssey</i> <i>Two young bloggers attempting to document their journey around the world experience a bizarre encounter that leaves one of them having extraordinary powers.</i>
11.30 p.m.	CSI Miami
12.30 a.m.	Close

- 2 In *The Odyssey*, the bloggers
- A try to record their trip.
 - B have phenomenal abilities.
 - C travel to get a bizarre experience.
 - D become excited about their power.



- 3 From the cartoon strip, we can conclude that the
- A son was rude to his father.
 - B father was unsympathetic.
 - C father wished his son to be a top scorer.
 - D son did not perform well in his examination.

When we receive instructions at our law office for making a will, we ask if the author wishes to make an organ donation.

“I wish I had known about that before,” he answered. “I gave my piano away a while ago.”

- 4 The text above is a clear case of
- A misconduct.
 - B misbehaviour.
 - C misjudgement.

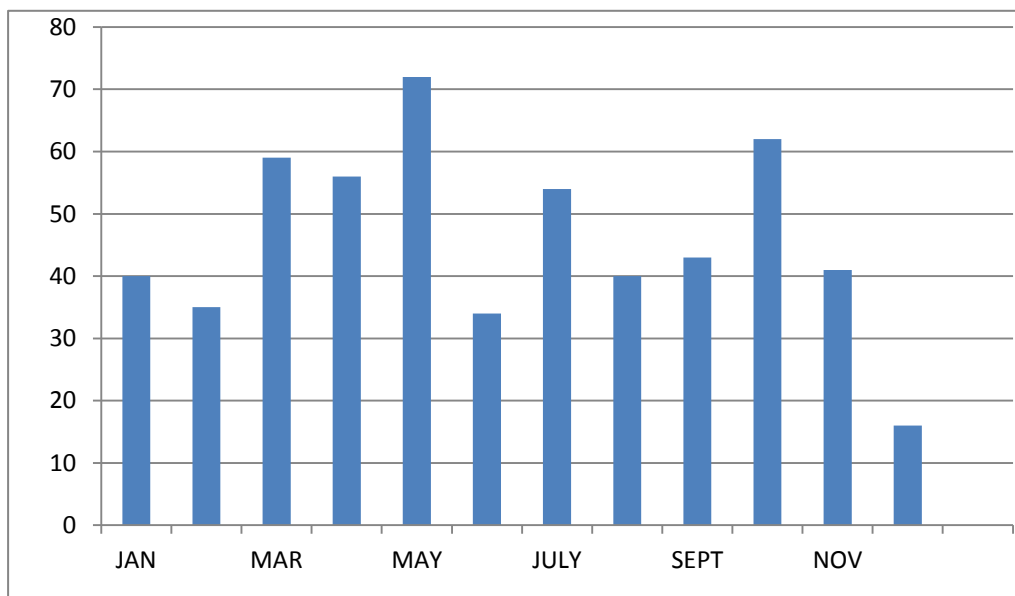
D misinterpretation.

When a waiter served Joe his chicken chop, Joe noticed the waiter's thumb clamped down on top of the meat. "Hey," said Joe. "I don't want your hands all over my food."

"Well," asked the waiter, "Would you be happier if I let it fall on the floor again?"

- 5 From the incident above, we know that the waiter
- A cheated his customers.
 - B denied his wrongdoing.
 - C did not practise good hygiene.
 - D did not accept the customer's complaint.

Candy sales in 2013



- 6 Based on the chart, which of the following statements is true?
- A February recorded the worst sales.
 - B The sales in January and August were alike.
 - C Candy was more popular at the end of the year.

- D There was a meagre increase in sales in October.



- 7 Planet Express Sdn. Bhd. emphasizes on its customers’
- A reaction.
 - B contribution.
 - C satisfaction.
 - D recommendation.

Dear Editor,

Sadly, despite efforts by authorities to educate children on road safety, many adults seem to encourage children to break traffic rules. From young, they are given the impression that it is all right to break the law. It is common to see more than one child riding pillion on a motorcycle. On top of that, these children do not wear helmets.

Occasionally, we can see a child standing out of a car’s sunroof. The parents are oblivious to the dangers of a sudden brake or accident. Wearing rear seat belts is mandatory but we have yet to see most parents enforce this ruling seriously.

Parents must strictly enforce traffic laws. Otherwise, all the efforts put by the authorities to improve road safety education will not bear fruit.

Concerned Parents

- 8 The aim of the letter by *Concerned Parents* is to highlight
- A parents’ mindset about road safety education.
 - B authorities’ good efforts to enforce traffic laws.
 - C parents’ responsibility to teach their children to be law abiding.

<http://edu.joshuatly.com/>
[facebook.com/edu.joshuatly](https://www.facebook.com/edu.joshuatly)

D authorities' strict enforcement to educate parents on road safety.

Questions 9 – 15 are based on the following passage.

People from different countries have extremely different attitudes on gift giving. Americans are perhaps the most fond of giving ____ (9) ____ the Arabs give the most lavish gifts and they may expect lavish gifts in return. The Japanese ____ (10) ____ a mania for giving gifts. On the other hand, giving and receiving gifts in China ____ (11) ____ something of an art and the ritual can be as important as the gift itself.

If you give a Latin American woman a box of handkerchieves, she may think that you want to see her ____ (12) _____. Giving an Argentinean a chrysanthemum would be worse because it is the common flower for ____ (13) ____ in Argentina and suggests death. Never give a knife to anyone as it implies you want to cut off your relationship ____ (14) ____ the receiver.

When giving a gift, hand the gift to the person with both hands. The gift is considered an extension of the person and handing ____ (15) ____ over with both hands is a sign of respect.

When receiving a gift, also accept it with both hands and say thank you.

- 9** **A** but
 B since
 C because
 D therefore

- 13** **A** funerals
 B birthdays
 C weddings
 D anniversaries

- 10** **A** has
 B had
 C have
 D having

- 14** **A** to
 B of
 C for
 D with

- 11** **A** is
 B are
 C was
 D were

- 15** **A** it
 B it's
 C its
 D itself

- 12** **A** cry
 B cries
 C cried
 D crying

Section B

[10 marks]

Questions 16 – 25

Read the news report below and use the information given to answer the questions that follow.

PETALING JAYA: The Selangor state government will start water rationing from 1 June. The Director of the Water Supply Consortium said the focus would be on areas that have been facing water disruption. Last Friday, the Water Supply Consortium would activate its rationing plan.




In addition, the director had also asked the Multi Corp Sdn. Bhd., to supply drinking water to the affected areas. “We pledge that consumers will receive water for four days a week,” he told reporters at a press conference here.

The director said the water rationing would go on until such time that the state government felt the need to discontinue it with the advent of the rainy season, at the end of August. He said the water rationing would help to conserve water in the dams over the next two months should the drought prolong. He also said that Selangor would be divided into two zones for the purpose of water rationing.

The Water Supply Consortium would have discussions with other related authorities in the badly affected areas. The director advised the people to use water sparingly, store enough water for their needs and cut down on activities which used much water during the current drought.

Questions 16-19

Using the information from the news report, complete the table below.

WATER AUTHORITIES INVOLVED		WATER RATIONING		DURATION	
					
16	17	From 18	To 19		
WAYS TO SAVE WATER 20 21					

Questions 20-25

Fill in the blanks with suitable words from the news report.

The Water Supply Consortium plans to start water rationing in the state. The Director of Water Supply Consortium pledges that consumers in Selangor will receive water for (22) _____ days weekly. He says the Water Supply Consortium will (23) _____ the water rationing if the rainy season comes earlier. Water rationing is important as it can save up water in the (24) _____. It is hoped that the rain will come at the end of August. The Water Supply Consortium will discuss with the other related authorities in the badly affected areas. During the (25) _____, the people are urged to save water. Cooperation from everyone is much needed.

Section C
[25 marks]

Questions 26 – 31 are based on the following passage.

- 1 “You’ve got to make it. The trip wouldn’t be any fun without you,” Marco insisted while boarding. Then, just as the flight was called, Daniele came running into the departure lounge. “Made it,” he said breathlessly.

- 2 On the Flight 1553 there were 27 passengers, five short of capacity. Marco took his seat next to his team coach, Joe. Daniele took seat 2A, at the front, close to Rossi, who was escorting the Cagliari team. Occupying the window seat in row four was Franco, who was an internationally known pianist. 5

- 3 While preparing to take off, flight attendant Tina began her safety briefing. Most paid no attention, but Marco would later remember all her words. Flight 1553 lifted off the runway at 11.19 a.m., climbed steeply and banked right onto a northerly course. As the aircraft reached its cruising altitude of 25,000 feet, Marco turned to his coach to discuss his freestyle technique, something Marco knew he had to improve. He used to find his training regimen boring. But once he started winning medals, Marco was hooked. Now he trained two hours a day, five, often six days a week, enjoying the feeling that he was growing stronger, and faster, by the month. 10
15

- 4 Flight 1553 was a short one, and they had been in the air only an hour when Daniele glimpsed the coastline on the horizon. It was announced that the descent was beginning. Landing would be in approximately 20 minutes. The sky that day was crystalline blue, and visibility was perfect. Still, landing could be a challenge. Flanked by mountains to the north, the airport is often battered by strong winds. And with Flight 1553 just minutes from landing, the Genoa tower warned Captain Bono of wind shear on the final approach path. 20

- 5 Wind shear, the erratic changes in wind speed and direction, is a serious hazard; and to make matters worse, the tower also reported a 20-knot crosswind from Flight 1553’s right that could blow them off the runway. Two minutes to touchdown, the plane rocked and shuddered as it hit strong winds. Marco remained calm. With a minute to land, Captain Bono roared in over the runway at over 260 kilometres per hour. The main landing gear hit the runway with a hard thud. 25

- 6 Balanced unsteadily on two wheels, Flight 1553 careered down the runway at around 240 kilometres per hour until the nosewheel touched down. Some passengers started screaming hysterically. The plane briefly righted itself, then dipped sharply to the left. From his seat near the front of the cabin, Daniele glanced at Tina, now strapped into her seat. By that time, the aircraft had already eaten up half the landing strip. 30

- 7 In the cockpit, Bono slammed the emergency brakes. But it was too late; within seconds the rubber had melted off the tyres and the metal wheels made a grinding sound against the runway. At that juncture, Tina urged the passengers to wear the life jackets placed under their seats. Skidding sideways, the plane smashed through a boundary wall. As luggage spewed from the overhead lockers, Daniele’s seat was half- 35

ripped from the floor and he slumped forward in the aisle. The plane hurtled out into the sea at 110 kilometres an hour, splashing down 30 metres away. **40**

- 8** Unhurt, Daniele got up slowly but his feet were wet. He was in horror. Water was gushing into the cabin, rising past his ankles. He grabbed frantically at his seat belt. "Help! Let us out!" someone yelled. But the plea was unanswered.

- 9** The tonnes of water pouring into the plane pushed the nose deeper under the surface, increasing the tilt in the cabin. Finally, Daniele freed himself. Two rows away, Franco was dazed; it took the musician a moment before he remembered where he was. Climbing up onto his seat, Franco could see that the water was up to the chests of passengers who were seated in front of him. They were about to die, he thought, and his turn was next. Suddenly they all heard a shout from the back of the plane. "Quick, this way!" **50**

(Adapted from *The Reader's Digest*, May 2001)

- 26** From paragraph 1, why was Daniele out of breath?

..... [1 mark]

- 27** From paragraph 2,

- (a) what was the maximum number of passengers for Flight 1553?

..... [1 mark]

- (b) who trained the Cagliari team?

.....[1 mark]

- 28** (a) From paragraph 3, why do you think Marco initially found this training routine boring?

.....
.....[1 mark]

- (b) From paragraph 4, what made landing difficult at times?

.....[1 mark]

- 29** (a) From paragraph 5, which word means *unpredictable*?

.....[1 mark]

(b) From paragraph 6, in your opinion why did the passengers scream frantically?

.....
.....[2 marks]

30 From Paragraph 8, give two possible reasons why the plea was unanswered?

Reason 1:.....[1 mark]

Reason 2:.....[1 mark]

31 Based on the passage given, write a **summary** on:

- the problems the aircraft had to face before and after landing

Credit will be given for use of own words but care must be taken not to change the original meaning.

Your summary must

- be in continuous writing (not in note form)
- use materials from **lines 20 – 46**
- not be longer than **130 words, including the 10 words** given below

Begin your summary as follows:

Flight 1553 began descending and was ready for landing when ...

[15 marks]

Section D

[20 marks]

32 Read the two stanzas of the poem *In the Midst of Hardship* below and answer the questions that follow.

At dawn they returned home
their soaked clothes torn
and approached the stove
their limbs marked by scratches
their legs full of wounds
but on their brows
there was not a sign of despair

The whole day and night just passed
they had to brave the horrendous flood
in the water all the time
between bloated carcasses
and tiny chips of tree barks
desperately looking for their son's
albino buffalo that was never found

Latiff Mohidin

(a) In stanza 1, who does the word 'they' refer to?

..... [1 mark]

(b) In stanza 2,

(i) which line highlights perseverance?

.....
[1 mark]

(ii) which word tells us that the animals have been dead for a long time?

..... [1 mark]

(c) Give two suggestions on how to help flood victims?

Suggestion 1 :
.....

Suggestion 2 :
.....

[2 marks]

33 *The following are the novels studied in the literature component in English Language.*

Catch Us If You Can - Catherine MacPhail

The Curse - Lee Su Ann

Step by Wicked Step - Anne Fine

*Choose any **one** of the novels above and answer the question below.*

Based on the novel you have studied, write about a character who shows a quality that you like. With close reference to the text, explain how that quality affects his or her life.

.....

.....

.....

.....

.....

.....

.....

.....

.....

.....

.....

.....

.....

.....

.....

.....

.....

.....

.....

.....

.....

ANSWER SHEET FOR SECTION A

1	A	B	C	D	9	A	B	C	D
2	A	B	C	D	10	A	B	C	D
3	A	B	C	D	11	A	B	C	D
4	A	B	C	D	12	A	B	C	D
5	A	B	C	D	13	A	B	C	D
6	A	B	C	D	14	A	B	C	D
7	A	B	C	D	15	A	B	C	D
8	A	B	C	D					

Examiner's Code		
Section	Marks	
A	15	
B	10	
C	25	
D	20	
Total	70	

**MODUL PENINGKATAN PRESTASI AKADEMIK
TINGKATAN 4 DAN TINGKATAN 5 TAHUN 2014**

SKEMA PEMARKAHAN

**BAHASA INGGERIS
KERTAS 1 DAN 2**

**MODUL 1:
PEPERIKSAAN PERTENGAHAN TAHUN 2014
TINGKATAN 5**

OVERALL ASSESSMENT OF PAPERS 1 AND 2

PAPER 1 **85 marks**

PAPER 2 **70 marks**

155 marks

$$\text{PERCENTAGE} = \frac{\text{COMBINED TOTAL OF PAPERS 1 \& 2}}{155} \times 100\%$$

PAPER 1**SECTION A – DIRECTED WRITING****Maximum Marks**

Content	15 marks
Language	20 marks

Total 35 marks

Detailed Marking Instructions

FORMAT	2 MARKS
CONTENT	13 MARKS
LANGUAGE	20 MARKS

TOTAL 35 MARKS

Format:	2 Marks	F1	Title	1 mark
		F2	Byline	1 mark
Content:	13 Marks	C1	Date: 27-30 April 2014	1 mark
		C2	Venue: Rimba Bay, Purnama Island	1 mark
		C3	Participants: 100 students	1 mark
		C4	Accommodation: Dormitory	1 mark
		C5	Trainers: Committee members of Friends of Earth	1 mark
		C6	Videos on environmental issues	1 mark
		C7	Beach cleaning	1 mark
		C8	Making handicrafts from recycled items	1 mark
		C9	Bird-watching	1 mark
		C10	Mother Nature dying	1 mark
		C11	Polluted world	1 mark
		C12	Conservation important	1 mark
		C13	Play roles effectively	1 mark
Language:	20 Marks		Refer to the criteria for marking language	

DIRECTED WRITING: CRITERIA FOR MARKING LANGUAGE

Mark Range	Description
A 19 – 20	Language accurate with maybe occasional first draft slips. Varied sentence structures in length and type. Some apt sophisticated vocabulary. Punctuation and spelling accurate. Paragraphs well-linked and show unity. Style and tone appropriate.
B 16 – 18	Language almost always accurate. Errors arise because of attempt to use more ambitious structures. Varied sentence structures. Wide vocabulary and spelling nearly always accurate. Paragraphs appropriately linked. Style and tone generally appropriate.
C 13 – 15	Language largely accurate. Simple structures used without errors. Mistakes may occur when more sophisticated structures are attempted. Adequate vocabulary. Punctuation generally accurate. Paragraphs show some unity. Style and tone fairly appropriate.
D 10 – 12	Language sufficiently accurate. Meaning comes through clearly. Patches of clarity seen when simple structures used. Mistakes creep in when complex structures are attempted. Adequate vocabulary but not so apt. Spelling errors when difficult words used. Inappropriate linkers may be used. Style and tone not always appropriate.
E 7 – 9	Sufficiently frequent errors hamper speed of reading but meaning never in doubt. Some simple accurate structures but accuracy not sustained. Limited vocabulary. Correct spelling of simple words. Paragraphs lack unity and incorrect use of linkers. Style and tone may not be appropriate.
U(i) 4 – 6	Frequent serious errors but meaning fairly clear. High incidence of errors impedes reading. A few simple structures used accurately. Limited vocabulary. Frequent spelling and punctuation errors. On the whole lacks planning. Style and tone inappropriate.
U(ii) 2 – 3	Multiple errors that make the reader re-read and reorganise before meaning becomes clear. Whole sections may make little or no sense. Hardly any accurate sentences, maybe one or two. Vocabulary very limited.
U(iii) 0 – 1	Almost impossible to recognise as pieces of English. May make no sense at all. '0' is awarded only when no sense at all from beginning to end.

Section B : Continuous Writing
Maximum : 50 marks

CRITERIA FOR ASSESSMENT

Grade	Mark Range	Descriptors
A	44 – 50	Language entirely accurate. Maybe occasional first draft slips. Varied sentence structures in length and type. Vocabulary wide and apt. Punctuation and spelling accurate. Paragraphs well-planned and well-linked. Topic addressed with consistent relevance. Interest aroused and sustained throughout.
B	38 – 43	Language accurate. Occasional errors are either minor or first draft slips. Vocabulary wide and used quite aptly. Sentences show some variation. Punctuation accurate. Spelling almost always accurate. Paragraphs show some planning. Interest aroused and sustained throughout most of the composition.
C	32 – 37	Language largely accurate. Accurate simple structures but errors may occur when more sophisticated structures are attempted. Vocabulary wide but not so apt. Tendency to use one type of structure giving a monotonous effect. Correct spelling of simple words but errors occur when spelling difficult words. Paragraphs may show some unity but links may be absent. Interest aroused but not sustained.
D	26 – 31	Language sufficiently accurate. Meaning clear. Patches of clarity when simple vocabulary and structures are used. Some varieties of sentence type and length. Adequate vocabulary. More spelling errors will occur. Paragraphs lack unity and planning. Composition lacks liveliness and interest value.
E	20 – 25	Meaning never in doubt but errors hamper reading. Simple structures may be accurate. Limited vocabulary. Frequent mistakes in spelling and punctuation. Paragraphs lack unity. Partial treatment of subject matter.
U(i)	14 – 19	Limitation of subject matter due to lack of linguistic skills. Meaning fairly clear. Many serious errors, mainly of one-word type. Communication established but errors may cause blurring. Sentences simple and often repetitive. There may be no paragraphs.
U(ii)	8 – 13	Errors multiple in nature, requiring the reader to read and re-read before being able to understand. High incidence of error makes meaning blur. Maybe short of required number of words. Able to get some sense.
U(iii)	0 – 7	Script almost entirely impossible to read. Full of multiple-word errors. Whole sections may make little or no sense. Where occasional patches of clarity occur, marks should be awarded. “0” is awarded only if no sense at all from beginning to end.

PAPER 2**SECTION A**

- | | |
|----|---|
| 1 | C |
| 2 | A |
| 3 | D |
| 4 | D |
| 5 | C |
| 6 | B |
| 7 | C |
| 8 | C |
| 9 | A |
| 10 | C |
| 11 | A |
| 12 | A |
| 13 | A |
| 14 | D |
| 15 | A |

SECTION B

- | | | | |
|----|--|---|--------------------------------------|
| 16 | Water Supply Consortium | } | Answers for no. 18, 19: In any order |
| 17 | Multi Corp Sdn. Bhd. | | |
| 18 | 1 June | | |
| 19 | End of August | | |
| 20 | use water sparingly | } | Answers for no. 20, 21: In any order |
| 21 | cut down on activities which used much water | | |
| 22 | four | | |
| 23 | discontinue | | |
| 24 | dams | | |
| 25 | drought | | |

- Note:**
1. Initial capital is mandatory for questions 16 and 17
 2. Award '0' for spelling errors if the word is taken from the text.

SECTION C

- 26** He came running into the departure lounge
Permissible Lifting: [Then, just asdeparture lounge]
(lines 2 – 3)
- 27** (a) 32 passengers (no lifting)
(b) Joe / (team) coach (no lifting)
- 28** (a) He was losing in competitions / He did not perform well / He did not win medals (accept any relevant answer) (no lifting)
(b) strong winds / wind shear (no lifting)
Permissible Lifting 1: [Flanked by....strong winds]
(Lines 19 – 20)
- 29** (a) erratic
(b) they were scared the plane might crash / the plane was speeding unsteadily / the speeding plane balanced precariously on two wheels (accept any relevant answer) (no lifting)
- 30** Everybody was too panicked to notice the plea
All passengers were too concerned to save themselves
Time was too limited for other passengers to help others
(Accept any two answers above – accept any other acceptable answers)

31 SUMMARY

Content (C) (maximum 10 marks even if all the points are given)

Style and Presentation (L)

C : 10 marks

L : 5 marks

Total : 15 marks

CONTENT POINTS

- 1) the Genoa tower warned Captain Bono of wind shear on the final approach path
- 2) a 20-knot crosswind
- 3) (At two minutes to touchdown), the plane rocked and shuddered / the plane hit strong winds
- 4) (the aircraft landed but) the main landing gear hit the runway with a hard thud
- 5) the plane balanced unsteadily on two wheels
- 6) careered down the runway at around 240 kilometres per hour (until the nosewheel touched down)
- 7) (The plane briefly righted itself), then dipped sharply to the left
- 8) The aircraft had already eaten up half the landing strip
- 9) (When the emergency brake was slammed), the rubber had melted off the tyres
- 10) skidding sideways
- 11) the plane smashed through a boundary wall
- 12) the plane hurtled out into the sea (at 110 kilometres an hour) / the plane splashed down 30 metres away into the sea
- 13) water was gushing into the cabin / tonnes of water poured into the plane
- 14) increasing the tilt in the cabin / the nose of the plane was pushed deeper under the surface

SUMMARY: CRITERIA FOR STYLE AND PRESENTATION

Mark	PARAPHRASE	Mark	USE OF ENGLISH
5	A sustained attempt to re-phrase text. Expression is secure. Allowance given for phrases / words lifted from text that are difficult to substitute.	5	Very occasional first draft slips. Language is accurate. Varied sentence structures. Use of original complex syntax. Punctuation and spelling accurate.
4	A noticeable attempt to re-phrase text. Free from stretches of concentrated lifting. Expression generally sound.	4	Language almost always accurate. Isolated serious errors. Some varied structures. Sentences may include original complex syntax. Punctuation and spelling nearly always accurate.
3	Intelligent and selective lifting. Limited attempts to re-phrase. Expression may not always be secure.	3	Language is largely accurate. Simple structures tend to dominate. Noticeable serious errors but not frequent. Sentences that show some varieties and complexities will generally be lifted from the text. Punctuation and spelling largely accurate.
2	Wholesale copying of text material, not a complete transcript of the original. Own language limited to single word substitution. Irrelevant sections more frequent.	2	More frequent serious errors but meaning never in doubt. Simple structures but accuracy not sustained. Simple punctuation and spelling of simple words largely accurate. Irrelevant or distorted details might destroy sequence in places.
1	More or less a complete transcript of the text. Random transcription of irrelevant parts of text.	1	Heavy frequency of serious errors. Fractured syntax. Poor punctuation and spelling. Errors impede reading.

Note:

$$\text{Mark for style and presentation (Language)} \quad \mathbf{L} = \frac{\text{Mark for P} + \text{Mark for UE}}{2}$$

Example: $\mathbf{L} = 3 + 4 = 7/2 = 3 \frac{1}{2} = 4$

SECTION D

- 32 (a) the couple / parents of the son whose buffalo was missing
 (b) (i) they had to brave the horrendous flood
 (ii) bloated
 (c) Carry their belongings to the relief centre / Provide clothes and blankets
 [Accept any two logical suggestions]

Guidelines for marking question 33

- Response** - 10 marks (Refer to the band descriptors for response)
Language - 5 marks (Refer to the band descriptors for language)

RESPONSE (10 marks)

Score	Band Descriptors
9-10	Response is relevant to the task specified and is well-supported with evidence from the text. Main and supporting ideas are relevant to the task specified. Ideas presented clearly, well-organised and easily understood.
7-8	Response is relevant to the task specified and is usually supported with evidence from the text. Main and supporting ideas are mostly relevant to the task specified. Ideas presented fairly clear, and easily understood.
5-6	Response is likely to be intermittently relevant to the task specified. The response is supported with some evidence from the text. Writing contains some ideas that are relevant to the task specified. Ideas presented generally clear and can be understood.
3-4	Response may be barely relevant to the task specified. The response is unlikely to have textual support. Writing barely contains ideas that may be relevant to the task specified. Ideas presented may be difficult to understand.
0-2	Has barely any understanding of the requirements of the task. Writes in a disorganized way. No coherence. Has no understanding of the task. Response provided in language other than English or no response.

LANGUAGE (5 MARKS)

Score	Band Descriptors
5	Apart from occasional slips, language is always accurate. Sentence structure is varied. Punctuation is accurate. Spelling is secure.
4	Language is almost always accurate. Unnoticeable serious errors may occur. Punctuation is accurate. Spelling is nearly always secure.
3	Language largely accurate. Simple structures tend to dominate. Noticeable serious errors may occur when more complex structures are attempted. Punctuation is largely accurate. Spelling is mostly secure.
2	Meaning is not in doubt. Serious errors become more frequent. Very simple structures used but accuracy is not sustained. Simple punctuation is usually correct. Spelling of simple words accurate. Irrelevant or distorted details destroy the sequence.
1	Heavy frequency of serious errors impedes reading. Fractured syntax is rampant. Punctuation falters. Spelling mostly inaccurate.