

Section A

Bahagian A

[36 marks]

[36 markah]

Answer **all** questions. Write your answers in the spaces provided in Answer Sheet. Each answer carries **one** mark.

Jawab **semua** soalan. Tulis jawapan anda di ruang yang disediakan pada Helaian Jawapan. Setiap jawapan diperuntukkan **satu** markah.

1 Table 1 shows activities carried out by three persons.

Jadual 1 menunjukkan aktiviti-aktiviti yang dilakukan oleh tiga individu.

A	B	C
<ul style="list-style-type: none">• make copies of copyrighted digital music and distributes to his friends <p><i>membuat salinan muzik digital yang dilindungi hak cipta dan mengedarkannya kepada kawan-kawannya</i></p>	<ul style="list-style-type: none">• copies his friend's essay and submitted it as his own assignment <p><i>membuat salinan esei rakannya dan menghantarnya sebagai tugasannya sendiri</i></p>	<ul style="list-style-type: none">• gains unauthorised access into a bank's computer system and sets up fake account to transfer money into his account <p><i>mendapat capaian ke atas sistem komputer bank tanpa kebenaran dan mewujudkan akaun palsu untuk memindahkan wang ke dalam akaunnya</i></p>

Table 1

Jadual 1

Based on Table 1, which **two** activities are against the cyber law?

Berdasarkan Jadual 1, manakah **dua** aktiviti yang bertentangan dengan undang-undang siber?

2 State whether the following statement is **True** or **False**.

*Nyatakan sama ada pernyataan berikut **Benar** atau **Palsu**.*

Computer security refers to the steps taken to protect a computer and the information against unwanted access.

Keselamatan komputer merujuk kepada langkah-langkah yang diambil untuk melindungi komputer dan maklumat daripada capaian yang tidak diingini.

3 Data and instructions that is entered into the memory of a computer is known as

Data dan arahan-arahan yang dimasukkan ke dalam memori komputer dikenali sebagai

A input
input

B output
output

C process
proses

D storage
storan

- 4 Figure 1 shows the convention to represent units of data measurement.
Rajah 1 menunjukkan konvensyen untuk mewakili unit-unit ukuran data.

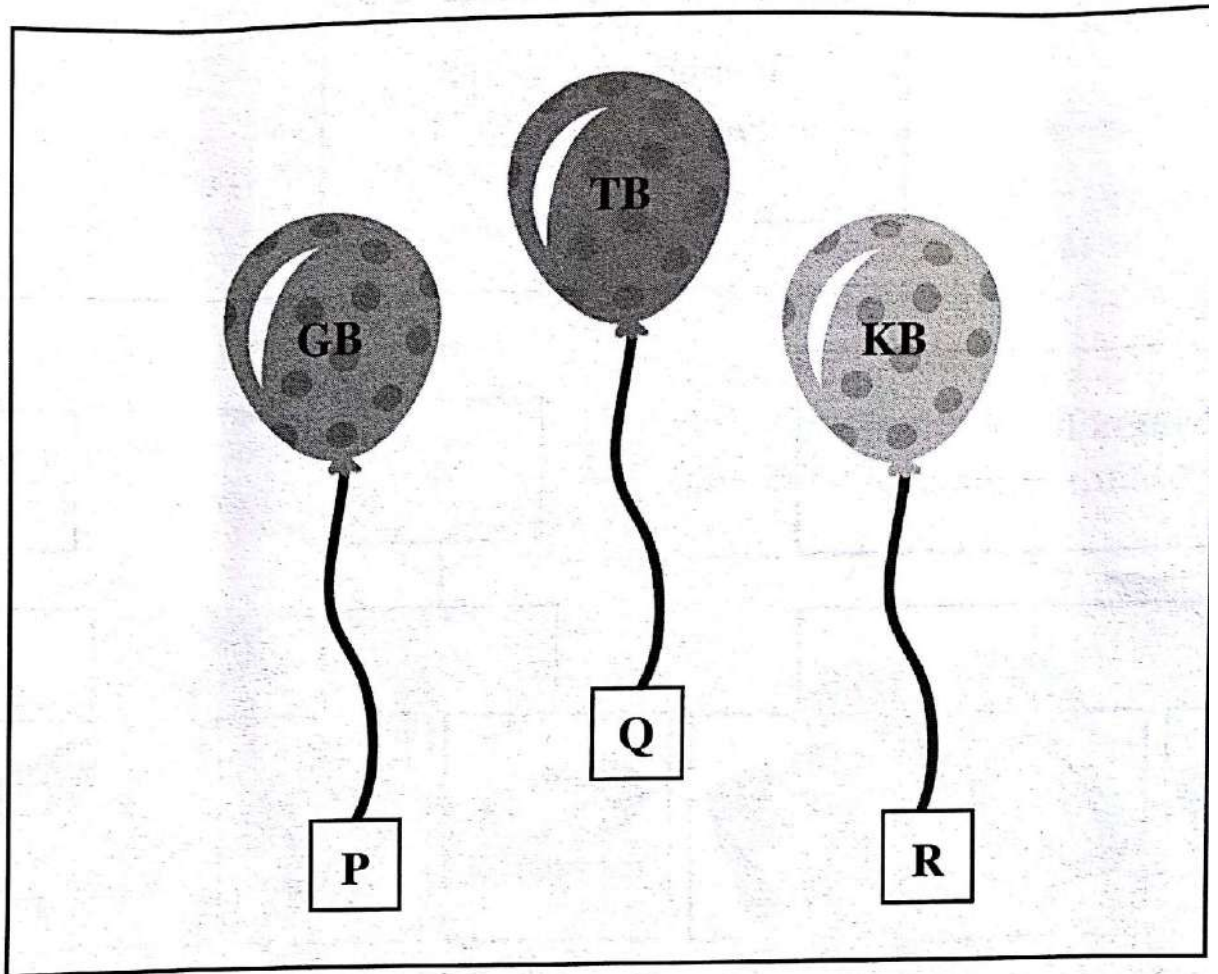


Figure 1

Rajah 1

Based on Figure 1, state the name of:

Berdasarkan Rajah 1, nyatakan nama:

(i) **P**

(ii) **Q**

SULIT

- 5 Figure 2 shows types of secondary storage.
Rajah 2 menunjukkan jenis-jenis storan sekunder.

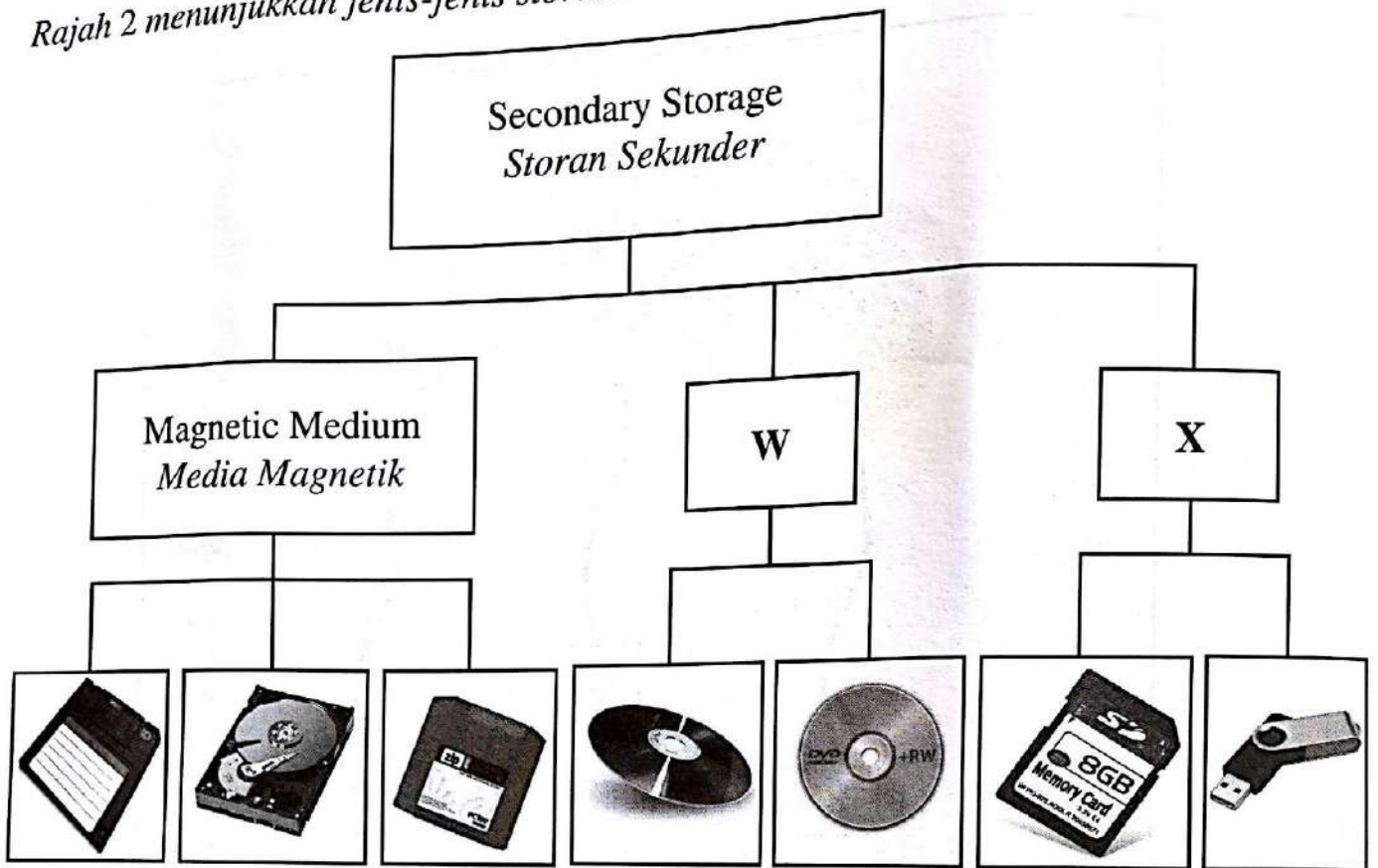


Figure 2

Rajah 2

Based on Figure 2, state the name of:

Berdasarkan Rajah 2, nyatakan nama:

- (i) W
- (ii) X
- 6 State whether the following statement is **True** or **False**.
Nyatakan sama ada pernyataan berikut **Benar** atau **Palsu**.

Word processor is an application software used to produce reports, mailing labels, newsletter and web pages.

Pemproses perkataan adalah perisian aplikasi yang digunakan untuk menghasilkan laporan, label mel, surat berita dan laman web.

7 Figure 3 shows a group of software developer having a meeting.

Rajah 3 menunjukkan sekumpulan pembangun perisian sedang bermesyuarat.

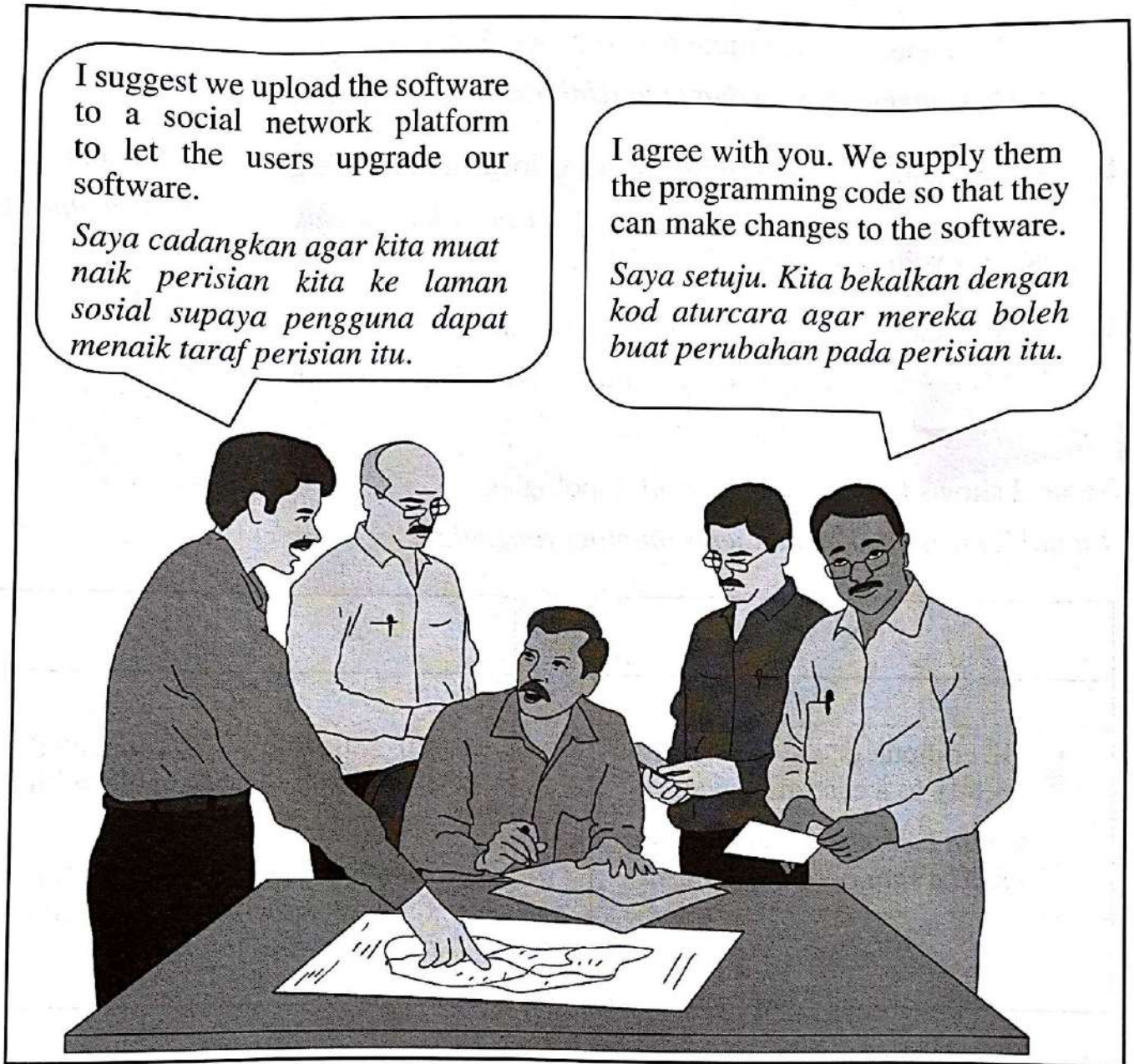


Figure 3

Rajah 3

Based on the criteria mentioned in the dialogue, what type of software is discussed?

Berdasarkan kriteria yang disebut di dalam perbualan, apakah jenis perisian yang dibincangkan?

SULIT

- 8 Which of the following definition of computer network types is correct.
Antara berikut yang manakah benar bagi definisi jenis-jenis rangkaian komputer.
- A LAN connects two or more networks within a city
LAN menghubungkan dua atau lebih rangkaian dalam sesebuah bandar
- B WAN connects two or more networks located in a different cities or countries
WAN menghubungkan dua atau lebih rangkaian terletak di bandar-bandar atau negara yang berlainan
- C MAN is a network located within a building
MAN adalah satu rangkaian yang terletak dalam sebuah bangunan
- 9 Table 2 shows two types of network topologies.
Jadual 2 menunjukkan dua jenis topologi rangkaian.

X	Y
<ul style="list-style-type: none"> All computers are connected directly to a central device <i>Semua komputer dihubungkan terus ke satu peranti berpusat</i>	<ul style="list-style-type: none"> All computers are connected to a single central cable with terminator at both ends <i>Semua komputer dihubungkan ke satu kabel pusat dengan penamat dihujungnya</i>

Table 2

Jadual 2

Based on Table 2, state the name of:

Berdasarkan Jadual 2, nyatakan nama:

- (i) X
- (ii) Y

10 Figure 4 shows the transmission between two devices and Table 3 shows various types of transmission media.

Rajah 4 menunjukkan penghantaran antara dua peranti dan Jadual 3 menunjukkan pelbagai jenis media penghantaran.



Figure 4

Rajah 4

P	Twisted pair cable <i>Kabel pasangan terpiuh</i>	Q	Infra red <i>Infra merah</i>
R	Bluetooth waves <i>Gelombang bluetooth</i>	S	Coaxial cable <i>Kabel sepaksi</i>

Table 3

Jadual 3

Based on Table 3, identify **two** media that belong to the category of transmission in Figure 4.

Berdasarkan Jadual 3, kenal pasti **dua** media yang dipunyai oleh kategori penghantaran dalam Rajah 4.

(i)

(ii)

SULIT

11 Table 4 describes the steps of crimping a UTP cable.
Jadual 4 menerangkan langkah-langkah mengelim kabel UTP.

I, II, III and IV are working steps for crimping UTP cables which are not arranged in the correct sequence.

I, II, III dan IV adalah langkah kerja mengelim kabel UTP yang tidak mengikut urutan.

Working Steps <i>Langkah Kerja</i>	
I	Untwist the twisted wires and arrange them following the 568B wiring schematic <i>Leraikan wayar pasangan berpintal dan susun mengikut skematik pendawaian 568B</i>
II	Strip off 5 cm of the cable jacket <i>Tanggalkan 5 cm jaket kabel</i>
III	Insert the wires into a RJ-45 connector and crimp using a crimping tool <i>Masukkan wayar ke penyambung RJ-45 dan kelim menggunakan pengelim</i>
IV	Cut the wires so that they are 1.5 cm from the base of the cable jacket <i>Potong wayar agar ia berjarak 1.5 cm dari hujung jaket kabel</i>

Table 4

Jadual 4

Based on Table 4, complete Table 5 to show the **correct** sequence of steps.

Berdasarkan Jadual 4, lengkapkan Jadual 5 untuk menunjukkan urutan langkah-langkah yang betul.

Step 1 <i>Langkah 1</i>	Step 2 <i>Langkah 2</i>	Step 3 <i>Langkah 3</i>	Step 4 <i>Langkah 4</i>
II	(i)	(ii)	III

Table 5

Jadual 5

SULIT

13

3765/1

12 Complete the following statement:

Lengkapkan pernyataan berikut:

A user clicks on the hypertext to get extra information on another page while exploring an encyclopedia CD. This interaction is a interactivity.

Pengguna mengklik hiperteks untuk mendapatkan maklumat tambahan pada halaman yang lain semasa meneroka CD ensiklopedia. Interaksi ini adalah interaktiviti

SULIT

13 Figure 5 shows medium of delivery used by a company.

Rajah 5 menunjukkan media penghantaran yang digunakan oleh sebuah syarikat.



Figure 5

Rajah 5

Based on Figure 5, which of the following are the characteristics of the medium of delivery?

Berdasarkan Rajah 5, yang manakah antara berikut adalah ciri-ciri media penghantaran itu?

- I Use medium resolution image and video
Guna imej dan video yang resolusi sederhana
- II Content can be updated easily
Kandungan mudah dikemaskinikan
- III Content cannot be changed by irresponsible person
Kandungan tidak boleh diubahsuai oleh individu yang tidak bertanggungjawab
- IV Product information can be delivered fast to the global market
Maklumat keluaran boleh disebarkan segera kepada pasaran global
- A I, II and III
I, II dan III
- B I, II and IV
I, II dan IV
- C I, III and IV
I, III dan IV
- D II, III and IV
II, III dan IV

14 Complete the following statement:

Lengkapkan pernyataan berikut:

In multimedia production, a editor is used to modify or edit a picture.

Dalam penerbitan multimedia, penyunting digunakan untuk mengubah suai atau mengedit gambar.

15 Figure 6 shows two concepts of authoring tools.

Rajah 6 menunjukkan dua konsep alat pengarangan.

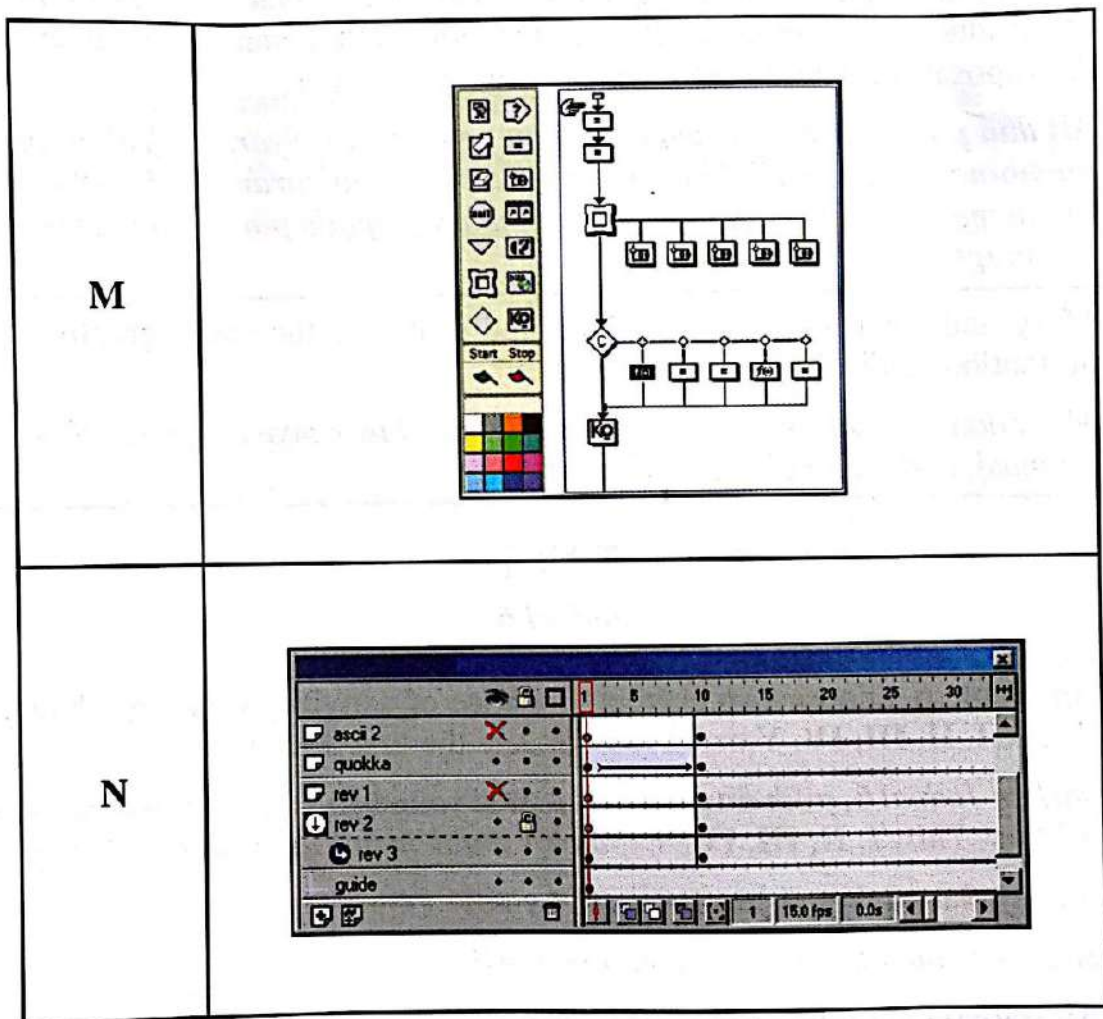


Figure 6

Rajah 6

Based on Figure 6, name the concepts of:

Berdasarkan Rajah 6, namakan konsep:

(i) M

(ii) N

SULIT

- 16 Table 6 describes the activities carried out during the first three phases in a multimedia production.

Jadual 6 menerangkan beberapa aktiviti yang dilakukan semasa tiga fasa pertama di dalam penerbitan multimedia.

<p>Shanty and her team drew the flow chart for a montage and produce the storyboard for each scene.</p> <p><i>Shanty dan pasukannya melukis carta alir untuk montaj dan menghasilkan papan cerita untuk setiap adegan.</i></p>
<p>Ali and his team met with the management of Syarikat AW to discuss the production of a montage for the launching of their anniversary event. A proposal was sent to the management a week later.</p> <p><i>Ali dan pasukannya berjumpa dengan pengurusan Syarikat AW untuk membincangkan penerbitan montaj untuk pelancaran majlis ulang tahun mereka. Satu cadangan telah dihantar kepada pihak pengurusan seminggu kemudian.</i></p>
<p>Mary and her team created, edited and sequence the texts, graphics, animation, audio and video elements.</p> <p><i>Mary dan pasukannya mencipta, menyunting dan menyusun teks, grafik, animasi, audio dan elemen video.</i></p>

Table 6

Jadual 6

Based on Table 6, choose **two** correct sequence of activities done by Shanty, Ali and Mary. Write **I, II, III, IV, V** or **VI** to complete the first three phases.

Berdasarkan Jadual 6, pilih dua urutan aktiviti yang betul yang dilakukan oleh Shanty, Ali dan Mary. Tulis I, II, III, IV, V atau VI untuk melaksanakan tiga fasa pertama.

- I** Shanty started the project followed by Ali
Shanty memulakan projek diikuti oleh Ali
- II** Ali started the project followed by Mary
Ali memulakan projek diikuti oleh Mary
- III** Ali started the project followed by Shanty
Ali memulakan projek diikuti oleh Shanty
- IV** Mary continues the project after Ali
Mary menyambung projek selepas Ali
- V** Shanty continues the project after Mary
Shanty menyambung projek selepas Mary
- VI** Mary continues the project after Shanty
Mary menyambung projek selepas Shanty

17 Table 7 shows the characteristics of a programming language.

Jadual 7 menunjukkan ciri bahasa pengaturcaraan.

Z
<ul style="list-style-type: none">• is machine dependent <i>bergantung pada mesin</i>• can only run in one particular type of computer <i>hanya boleh digunakan pada satu jenis komputer</i>• each instruction equates to a single machine instruction <i>setiap arahan bersamaan dengan satu arahan mesin</i>

Table 7

Jadual 7

Based on Table 7, state the level of programming language of Z.

Berdasarkan Jadual 7, nyatakan aras bagi bahasa pengaturcaraan Z.

18 Table 8 shows examples of program statement.

Jadual 8 menunjukkan contoh-contoh pernyataan program.

I	ADD 211 (8, 13), 02B (4, 7)
II	If (marks \geq 90) Then grade = "A+"
III	SELECT studentname FROM STUDENT WHERE marks \geq 90
IV	area = width * length ; printf ("The area is %d\n", area);

Table 8

Jadual 8

Based on Table 8, which of the following examples are from the third generation programming languages?

Berdasarkan Jadual 8, yang manakah antara berikut contoh-contoh dari bahasa pengaturcaraan generasi ketiga?

A I and II

I dan II

B II and III

II dan III

C II and IV

II dan IV

D III and IV

III dan IV

19 Figure 7 shows the translation method of a compiler.

Rajah 7 menunjukkan kaedah penterjemahan bagi pengkompil.

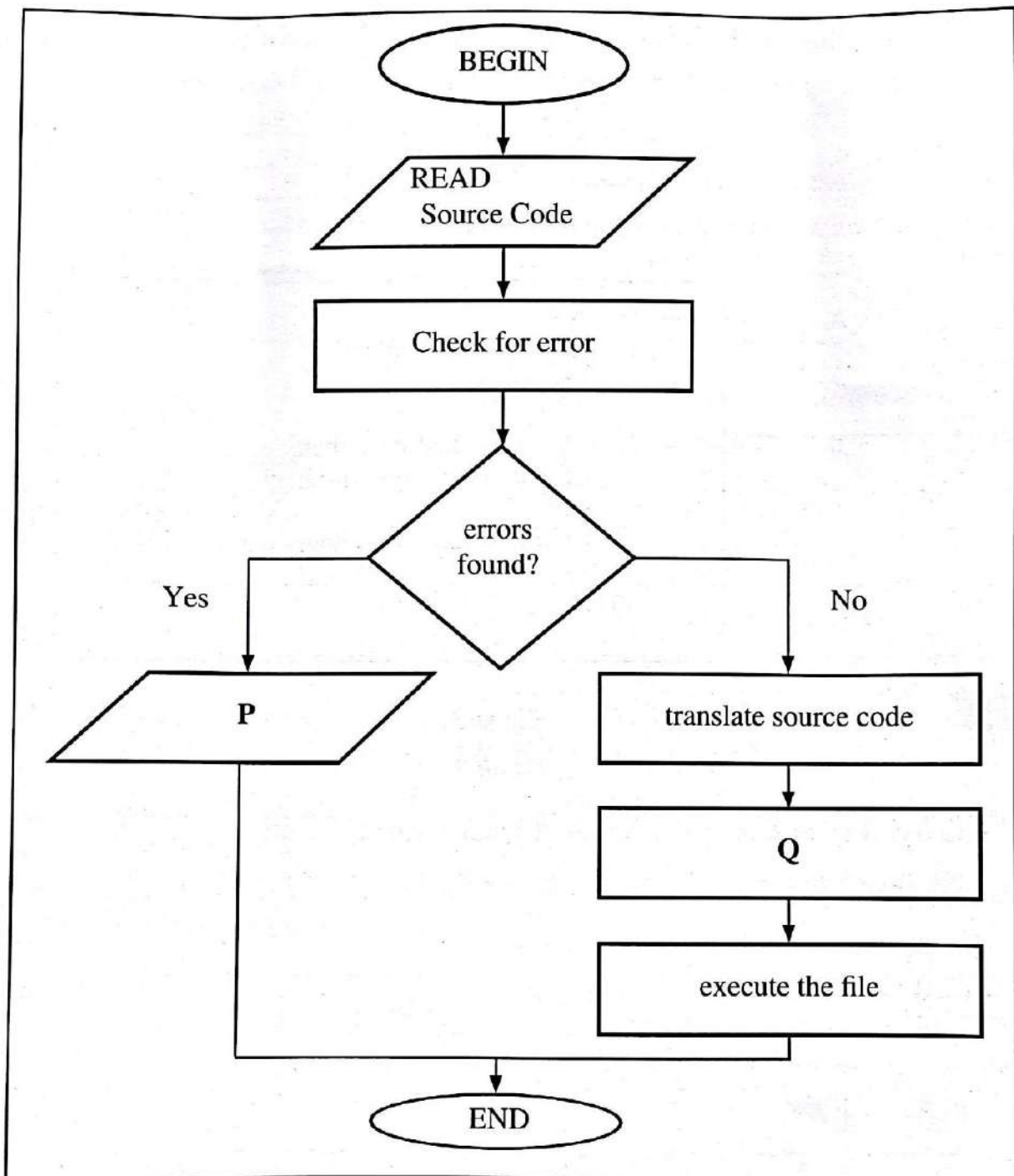


Figure 7

Rajah 7

Based on Figure 7,

Berdasarkan Rajah 7,

(i) what is produced in **P**?

apakah yang dihasilkan dalam P?

(ii) name the file produced in **Q**

namakan fail yang dihasilkan dalam Q

SULIT

20 Complete the following statement:

Lengkapkan pernyataan berikut:

A data type that consists of either true or false value is known as

Jenis data yang terdiri sama ada nilai benar atau palsu dikenali sebagai

21 Figure 8 shows a program pseudocode.

Rajah 8 menunjukkan satu program pseudokod.

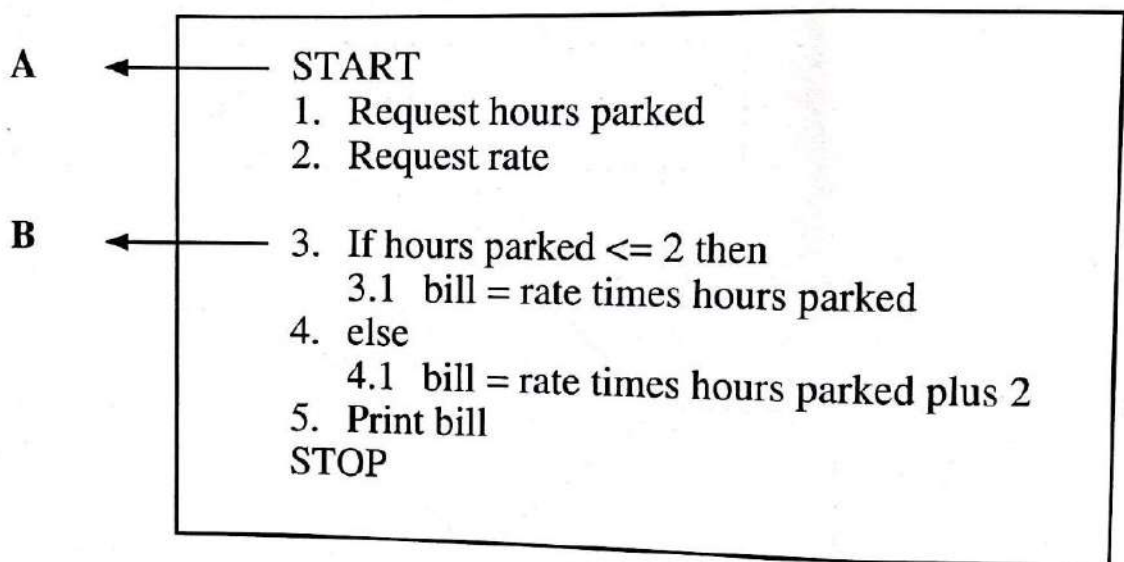


Figure 8

Rajah 8

Based on Figure 8, draw the flowchart symbol that represent:

Berdasarkan Rajah 8, lakarkan simbol carta alir yang mewakili:

(i) A

(ii) B

22 Table 9 shows examples that represent information system components.

Jadual 9 menunjukkan contoh-contoh yang mewakili komponen-komponen sistem maklumat.



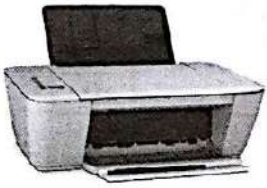



<table border="1"> <thead> <tr> <th colspan="3">BOOK STOCK REPORT</th> </tr> <tr> <th>NO</th> <th>TITLE</th> <th>QUANTITY</th> </tr> </thead> <tbody> <tr> <td>1</td> <td>PT3 - M</td> <td>20</td> </tr> <tr> <td>2</td> <td>SCORE UPSR</td> <td>30</td> </tr> <tr> <td>3</td> <td>MATHEMATICS</td> <td>51</td> </tr> </tbody> </table>	BOOK STOCK REPORT			NO	TITLE	QUANTITY	1	PT3 - M	20	2	SCORE UPSR	30	3	MATHEMATICS	51		
BOOK STOCK REPORT																	
NO	TITLE	QUANTITY															
1	PT3 - M	20															
2	SCORE UPSR	30															
3	MATHEMATICS	51															
P	Q	R															
	<table border="1"> <thead> <tr> <th colspan="2">System Work Flow</th> </tr> </thead> <tbody> <tr> <td style="text-align: center;">LOGIN</td> <td style="text-align: center;">↓</td> </tr> <tr> <td style="text-align: center;">MAIN PAGE</td> <td style="text-align: center;">↓</td> </tr> </tbody> </table>	System Work Flow		LOGIN	↓	MAIN PAGE	↓	<table border="1"> <thead> <tr> <th colspan="2">Employee Record</th> </tr> </thead> <tbody> <tr> <td style="text-align: center;"></td> <td>Name: John ID :00017</td> </tr> </tbody> </table>	Employee Record			Name: John ID :00017					
System Work Flow																	
LOGIN	↓																
MAIN PAGE	↓																
Employee Record																	
	Name: John ID :00017																
S	T	U															

Table 9

Jadual 9

Based on Table 9, which of the following categorise the examples of information system components correctly?

Berdasarkan Jadual 9, antara yang berikut manakah kategori contoh-contoh komponen sistem maklumat yang betul?

A

Data	P, T
Hardware <i>Perkakasan</i>	Q, S
Procedure <i>Prosedur</i>	R, U

B

Data	Q, S
Hardware <i>Perkakasan</i>	R, T
Procedure <i>Prosedur</i>	P, U

C

Data	Q, S
Hardware <i>Perkakasan</i>	P, T
Procedure <i>Prosedur</i>	R, U

D

Data	P, U
Hardware <i>Perkakasan</i>	Q, S
Procedure <i>Prosedur</i>	R, T

23 Table 10 shows a collection of students information in a data file.

Jadual 10 menunjukkan koleksi maklumat murid-murid dalam fail data.

Student ID <i>ID Murid</i>	Student Name <i>Nama Murid</i>	Class <i>Kelas</i>	Uniform Unit <i>Unit Beruniform</i>
A001	Azahari bin Husin	5 Bestari	KRS
A002	Yogeswari a/p Ragu	5 Bestari	Kadet Polis
A003	Chong Mei Fun	5 Bestari	BSMM
A004	Audryna Iman bt Ali	5 Bestari	Kadet Polis

Diagram labels: **A** points to the Student ID column, **B** points to the Uniform Unit column, and **C** points to the entire table.

Table 10

Jadual 10

Based on Table 10, state what A, B or C represent to complete the data hierarchy in Figure 9.

Berdasarkan Jadual 10, nyatakan apakah yang diwakili oleh A, B atau C untuk melengkapkan hierarki dalam Rajah 9.

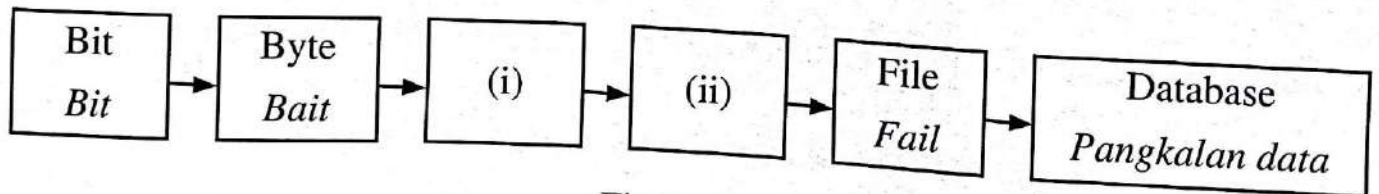


Figure 9

Rajah 9

24 Table 11 shows the relationship between three tables.

Jadual 11 menunjukkan hubungan antara tiga jadual.

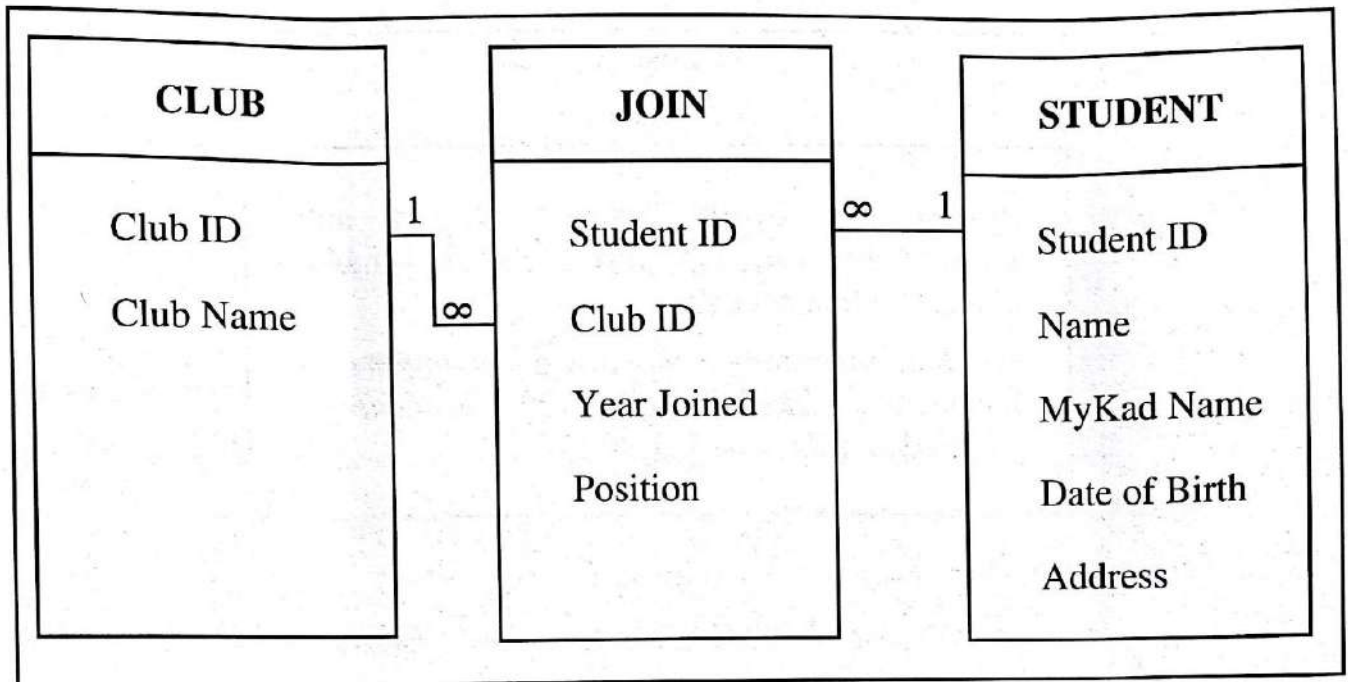


Table 11

Jadual 11

Based on Table 11, choose the characteristic of Club ID in the JOIN Table.

Berdasarkan Jadual 11, pilih ciri Club ID dalam Jadual JOIN.

- A Club ID may have null values
Club ID mungkin mengandungi nilai nol
- B Club ID may have duplicate values
Club ID mungkin mempunyai nilai yang sama
- C Club ID uniquely identifies each record
Club ID mengenal pasti setiap rekod secara unik

25 Table 12 shows an activity in system development phase.

Jadual 12 menunjukkan satu aktiviti dalam fasa pembangunan sistem.

Phase X Fasa X
System developers provide support and monitor the system performance. They make changes when needed. <i>Pembangun sistem menyediakan sokongan dan menyelia prestasi sistem. Mereka membuat perubahan bila diperlukan.</i>

Table 12

Jadual 12

Based on Table 12, state the name of phase X.

Berdasarkan Jadual 12, nyatakan nama fasa X.

Section B**Bahagian B**

[20 marks]

[20 markah]

Answer **all** questions.*Jawab semua soalan.*

26 Figure 10 shows the report displayed on a computer screen.

Rajah 10 menunjukkan laporan yang dipaparkan pada skrin komputer.

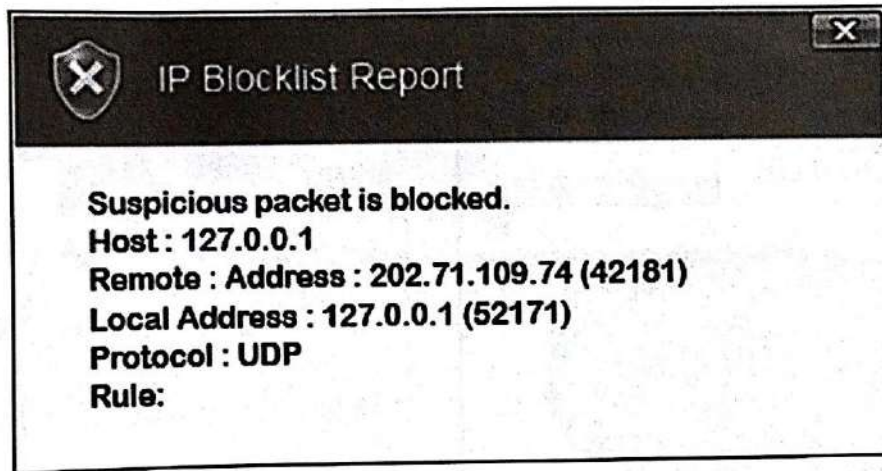


Figure 10

Rajah 10

Based on Figure 10, explain **two** possible causes for the report to appear.

Berdasarkan Rajah 10, terangkan dua kemungkinan yang menyebabkan laporan itu terapar.

[4 marks]

[4 markah]

- 27 Figure 11 shows the properties of Omar's flash memory and the details of the files in his school computer.

Rajah 11 menunjukkan kandungan ingatan kilat Omar dan butiran fail di dalam komputer sekolahnya.

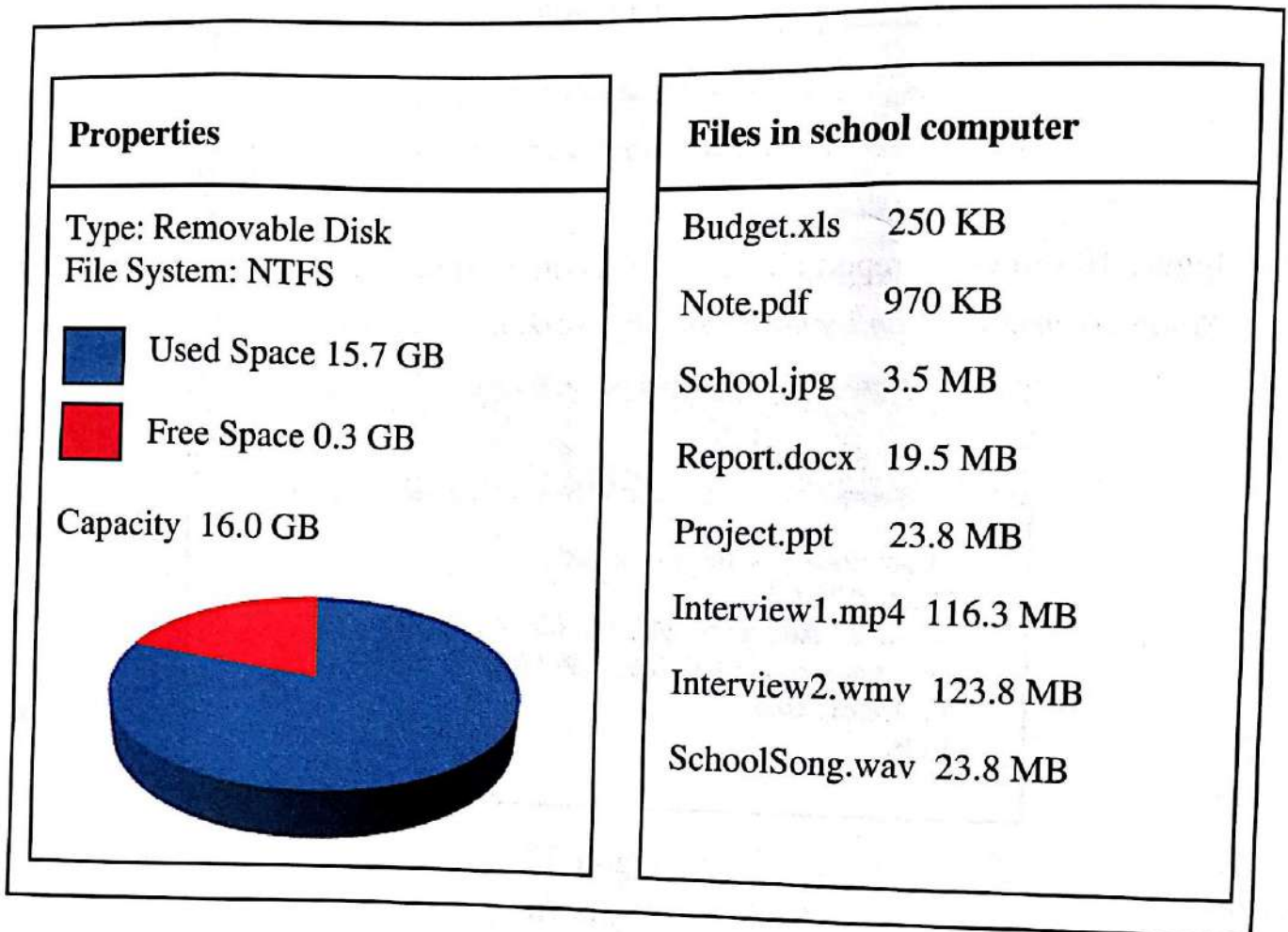


Figure 11

Rajah 11

Based on Figure 11, how can Omar transfer the files from the school computer using the same removable media in order for him to edit the files at home to complete his assignment. Explain your answer.

Berdasarkan Rajah 11, bagaimana Omar boleh memindahkan fail-fail daripada komputer sekolah menggunakan media mudah alih yang sama supaya dia boleh menyunting failnya di rumah untuk menyiapkan tugasannya.
Terangkan jawapan anda.

[4 marks]

[4 markah]

- 28 Figure 12(a) shows a cable tester and Figure 12(b) shows the sequence of indicator lights on the master and remote test units.

Rajah 12(a) menunjukkan sebuah penguji kabel dan Rajah 12(b) menunjukkan jujukan lampu penunjuk pada unit penguji induk dan unit penguji jarak jauh.



Figure 12(a)

Rajah 12(a)

MASTER	REMOTE
1	1
2	2
3	3
4	4
5	6
6	5
7	
8	8

Figure 12(b)

Rajah 12(b)

Based on Figure 12(b), explain the cable test result when the cable in Figure 12(a) is tested.

Berdasarkan Rajah 12(b), terangkan keputusan ujian kabel itu apabila kabel di Rajah 12(a) diuji.

[4 marks]

[4 markah]

- 29 Figure 13(a) shows three image files. Figure 13(b) shows the HTML code used to generate the web page in Figure 13(c). Figure 13(d) shows the code changes of Figure 13(b).

Rajah 13(a) menunjukkan tiga fail imej. Rajah 13(b) menunjukkan kod HTML yang digunakan untuk memaparkan laman web dalam Rajah 13(c). Rajah 13(d) menunjukkan perubahan kod pada Rajah 13(b).

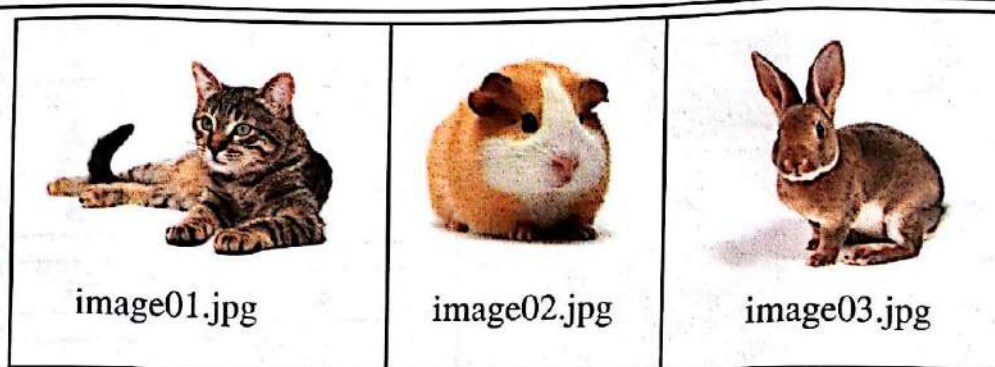


Figure 13(a)

Rajah 13(a)

```
index01.html - Notepad
File Edit Format View Help

<!DOCTYPE html>

<body bgcolor = "cyan">

<center>
<font size = "12" color = "red">My Favourite Pet</font>
<p><img src = "image01.jpg"></p>
</center>

</body>
```

Figure 13(b)

Rajah 13(b)



Figure 13(c)

Rajah 13(c)

```
index02.html - Notepad
File Edit Format View Help

<!DOCTYPE html>

<body bgcolor = "green">

<center>
<font size = "18" color = "yellow">My Favourite Pet</font>
<p><img src = "image03.jpg"></p>
</center>

</body>
```

Figure 13(d)

Rajah 13(d)

Figure 13

Rajah 13

SULIT

29

3765/1

Based on Figure 13, state **four** changes in Figure 13(c) when the code is modified from Figure 13(b) to Figure 13(d).

Berdasarkan Rajah 13, nyatakan empat perubahan dalam Rajah 13(c) apabila kod diubahsuai dari Rajah 13(b) ke Rajah 13(d).

[4 marks]

[4 markah]

- 30 Figure 14 shows the initial interface design of a touch screen vending machine.
Rajah 14 menunjukkan reka bentuk antara muka awal skrin sesentuh mesin layan diri.

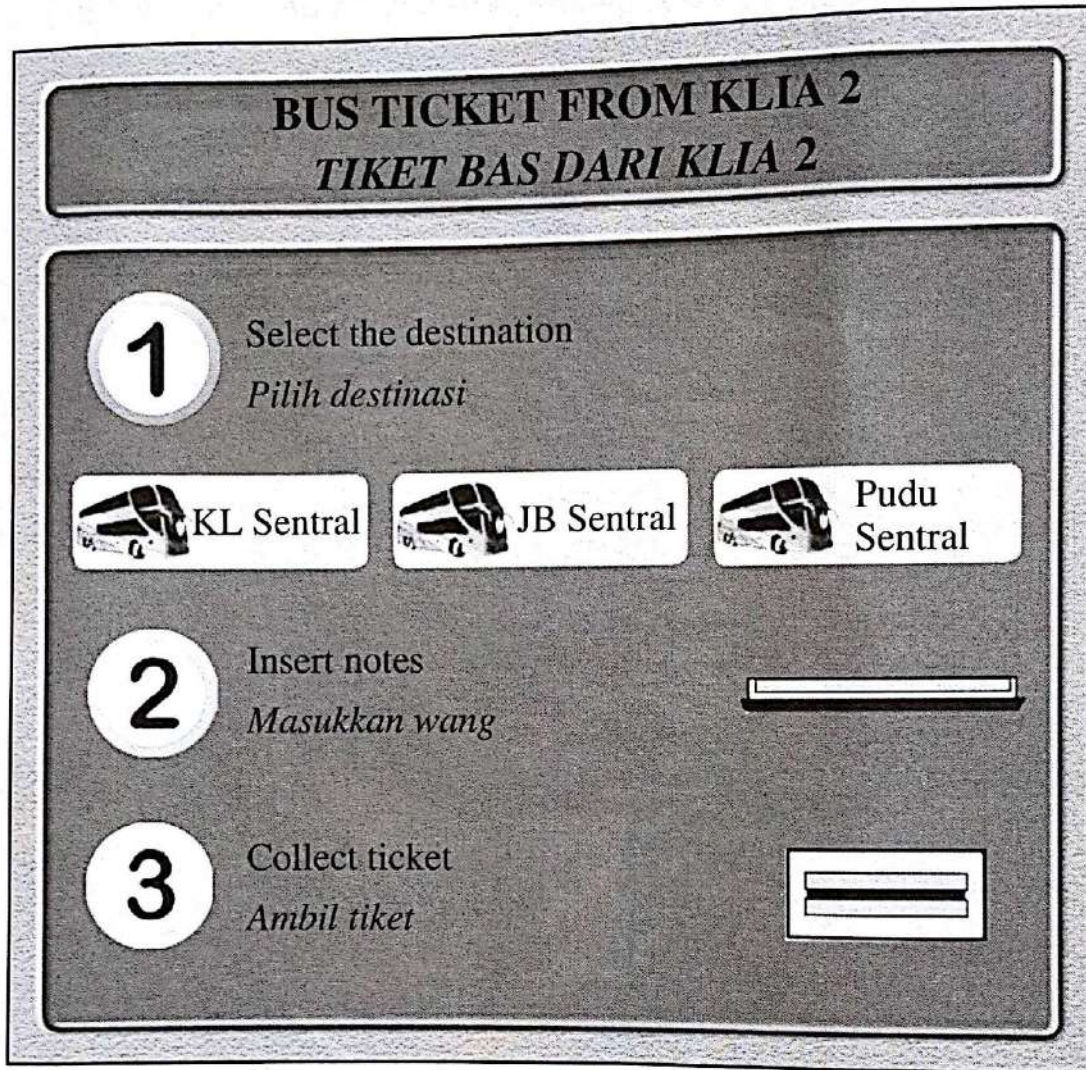


Figure 14

Rajah 14

Based on Figure 14, if you are a programmer how would you improve the interface design?

Berdasarkan Rajah 14, jika anda seorang pengaturcara bagaimanakah anda membuat penambahbaikan pada reka bentuk antara muka itu?

[4 marks]

[4 markah]

SULIT

- 31 Your team has been assigned to produce an educational multimedia presentation. Table 13 shows a proposal for the project.
- Pasukan anda telah ditugaskan untuk menghasilkan satu persembahan multimedia pendidikan. Jadual 13 menunjukkan satu cadangan untuk projek itu.*

Project Title <i>Tajuk Projek</i>	Basic Mathematical Operations <i>Asas Operasi Matematik</i>
Problem Statement <i>Penyataan Masalah</i>	To create an interactive multimedia project regarding basic mathematical operations <i>Untuk menghasilkan projek multimedia interaktif tentang operasi asas matematik</i>
Objective <i>Objektif</i>	To teach year one students, four basic mathematical operations: Addition, Subtraction, Multiplication and Division <i>Untuk mengajar murid tahun satu, empat operasi asas matematik: Tambah, Tolak, Darab dan Bahagi</i>

Table 13

Jadual 13

Based on Table 13,

Berdasarkan Jadual 13,

- (a) Sketch a storyboard for any one page.

Lakarkan papan cerita untuk mana-mana satu halaman.

[4 marks]

[4 markah]

- (b) State how the user interface principles applied in your storyboard for:

Nyatakan bagaimana prinsip-prinsip antara muka digunakan dalam papan cerita anda untuk:

- (i) context

konteks

- (ii) flexibility

fleksibiliti

- (iii) learnability

boleh dipelajari

[3 marks]

[3 markah]

32 Figure 15(a) shows an email received by a bank customer. He clicked on the link and he was directed to a web page as shown in Figure 15(b).

Rajah 15(a) menunjukkan emel yang diterima oleh pelanggan bank. Dia mengklik pautan itu dan telah dihalakan ke laman sesawang seperti ditunjukkan dalam Rajah 15(b).

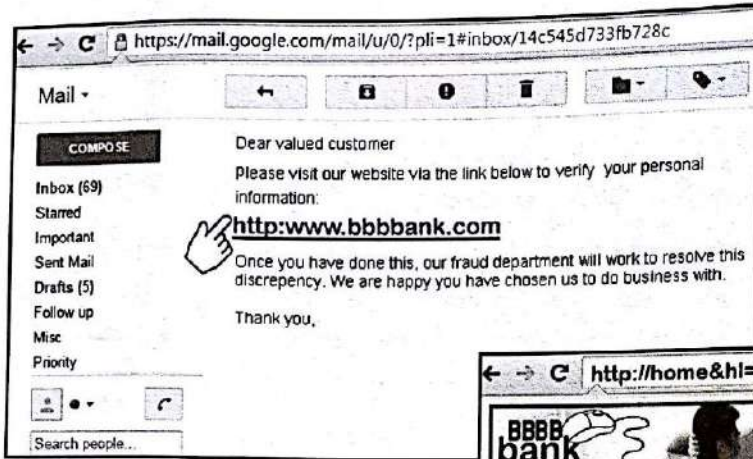


Figure 15(a)
Rajah 15(a)

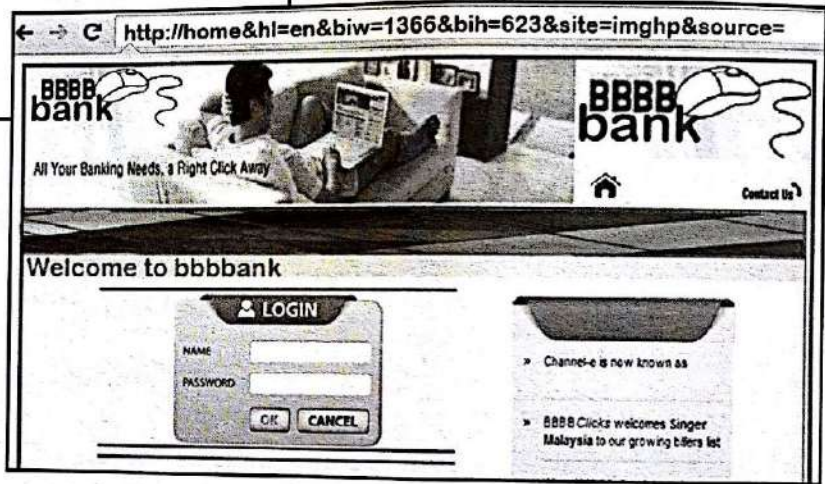


Figure 15(b)
Rajah 15(b)

A week later, the customer found that he had lost some amount of money in his savings account.

Seminggu kemudian, pelanggan itu mendapati dia telah kehilangan sejumlah wang daripada akaun simpanannya.

Based on the situation,
Berdasarkan situasi itu,

(a) Identify the computer crime shown in Figure 15(a).
Justify your answer.

Kenal pasti jenayah komputer yang ditunjukkan dalam Rajah 15(a).
Beri justifikasi anda.

[2 marks]
[2 markah]

SULIT

35

3765/1

- (b) As an ICT security administrator in the bank, propose **five** security guidelines for the customer to prevent the incident from happening again.

*Sebagai pentadbir keselamatan TMK di bank itu, cadangkan **lima** panduan keselamatan bagi pelanggan itu untuk mencegah insiden daripada berlaku lagi.*

[5 marks]

[5 markah]

SULIT

- 33 A college intends to keep student information using a database management system. Table 14(a) shows the information which are recorded manually and Table 14(b) shows the STUDENT table created.

Sebuah kolej ingin menyimpan maklumat murid dengan menggunakan satu sistem pengurusan pangkalan data. Jadual 14(a) menunjukkan maklumat yang direkod secara manual dan Jadual 14(b) menunjukkan jadual PELAJAR yang dibina.

Student Number <i>Nombor Pelajar</i>	Name <i>Nama</i>	Supervisor ID <i>ID Penyelia</i>	Supervisor Name <i>Nama Penyelia</i>	Date of Birth <i>Tarikh Lahir</i>
0011	Chow Lay Bee	AK	Aziz bin Khalid	02/01/96
1234	Siti bte Azlan	AK	Aziz bin Khalid	01/11/96
1101	Grace Gan	JL	Jackey Lee	02/03/96
0185	Dewi a/p Kanusamy	AK	Aziz bin Khalid	14/01/96
2318	Nurli binti Ramli	JL	Jackey Lee	01/02/96

Table 14(a)

Jadual 14(a)

Field	Data Type	Field Size
Student Number	Text	4
Name	Text	20
Supervisor ID	Text	2
Supervisor Name	Text	30
Date of Birth	Date	-

Table 14(b)

Jadual 14(b)

Based on Table 14(a) and Table 14(b),

Berdasarkan Jadual 14(a) dan Jadual 14(b),

- (a) Identify **two** weaknesses of the table created in Table 14(b).

*Kenal pasti **dua** kelemahan jadual yang dibina dalam Jadual 14(b).*

[2 marks]

[2 markah]

SULIT

37

3765/1

(b) Create **two** tables to solve the problem identified in Table 14(a).

*Bina **dua** jadual untuk menyelesaikan masalah yang dikenal pasti dalam
Jadual 14(a).*

[5 marks]

[5 markah]

END OF QUESTION PAPER
KERTAS PEPERIKSAAN TAMAT